

SV4C SYSTEM

Visible fixing system using screwing on four sides for aluminium composite panels



Principle

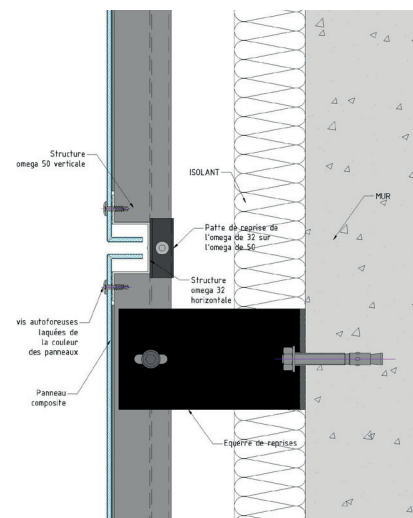
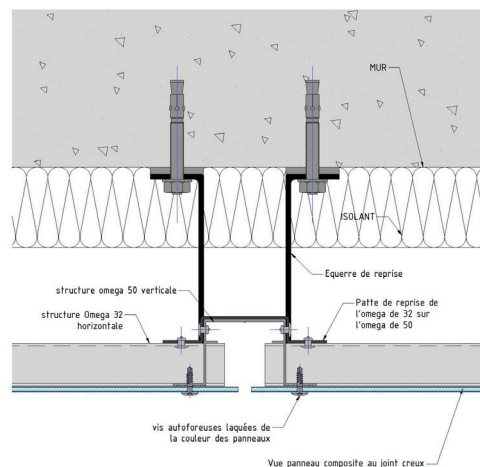
Installation system using front-fixing and screwing on four sides

Applications

Horizontal and vertical facade architecture with raised or curved forms (curved parts, contours, diamond points, deep coffers, etc.) and straight-line forms.

The benefits

- Profile invisible in the recessed joint
- Option of closing the recessed joint with a double ply
- Finish with screw painted the colour of the material or with screw cover
- Pre-drilled panel to ensure alignment on the facade
- Self-drilling screws with threadless shank below the head enabling moderate tightening and expansion of the panel



Fitting

Vertically attach the top-hat profiles of the framework which have notches at the fixing centres of the horizontal joints
Interlock the horizontal top-hat profiles
Screw the four sides of the panel to the profiles

The system kit

- Ready-to-use panel
- Framework profiles supplied
- Self-drilling screw, screw cover