

TIM ALU SYSTEM

Invisible fixing system using pre-adjusted clips for aluminium composite cassettes



Principle

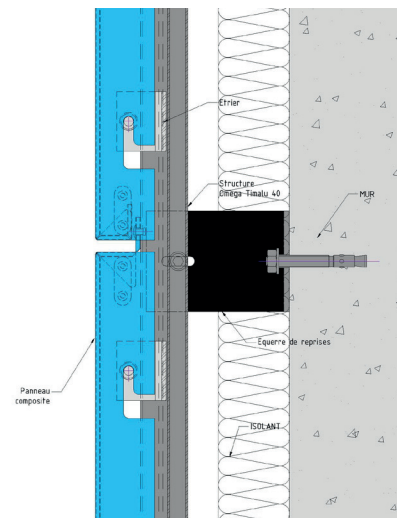
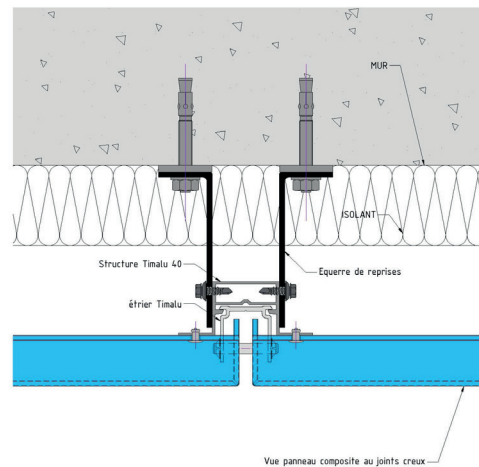
Installation system using interlocking on pre-adjusted clips with invisible fixings.

Applications

Horizontal and vertical facade architecture with raised or curved forms (curved parts, contours, diamond points, deep coffers, etc.) and straight-line forms.

The benefits

- Invisible fixings
- Quick installation of the top-hat profiles of the framework using self-drilling screws to attach to brackets
- Patented system of adjustable clips enabling removal directly at the facade without sliding the clip along the profile
- Large cassette (up to 1.40 m by 6 m)
- Saves on raw materials due to a double fold
- Two profiles to vary the depths and increase inertia



Fitting

Attach the top-hat profiles with pre-adjusted clip
Install the cassettes by lateral suspension of the slots on the clips
Lock at the top of the cassette.

The system kit

- Ready-to-use cassettes
- Framework profiles with pre-adjusted clips supplied