

OMEGA 41

For horizontal or vertical layout – invisible fixing system (cassettes) using pre-adjusted stirrup



Principle

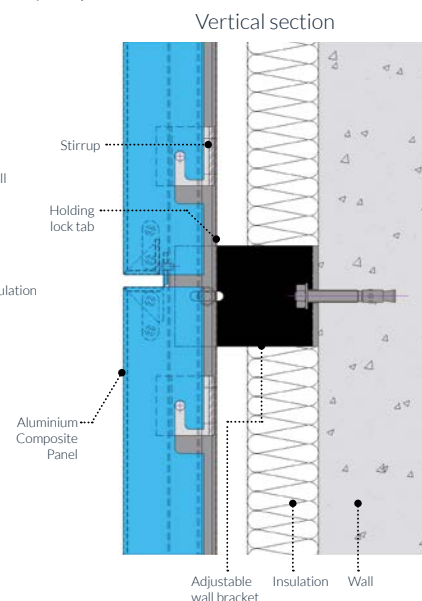
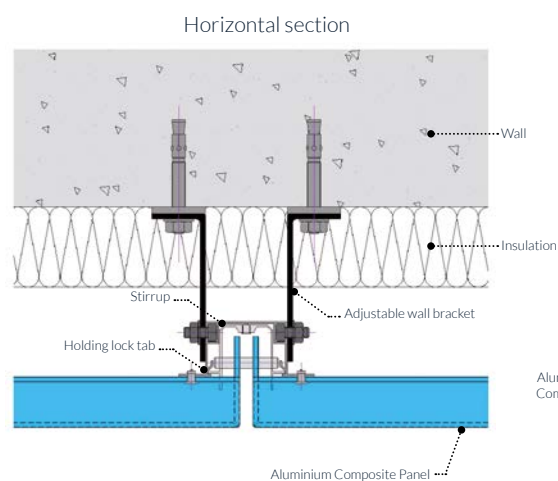
Rainscreen cladding system using lateral suspension on pre-adjusted stirrup with invisible fixings.

Applications

Horizontal and vertical layout with raised or curved forms (curved parts, diamond shapes, deep coffers, etc.) and straight-line forms.

Benefits

- Invisible fixings
- Saves time with pre-adjustment of the stirrup on the main profiles
- Stirrup individually removable directly at the facade
- Large cassette (up to 1.40 m by 6 m)
- Without drilling on profile to fix adjustable bracket



Installation

- Fix main profile at each hollow seal
- Install the cassettes by lateral suspension of the slots on the stirrups
- Lock at the top of the cassette

Our Offer

- Ready-to-use cassettes
- Framework profiles with pre-adjusted clips supplied