

SR2C SYSTEM

Visible fixing system using riveting on two sides for aluminium composite panels



Principle

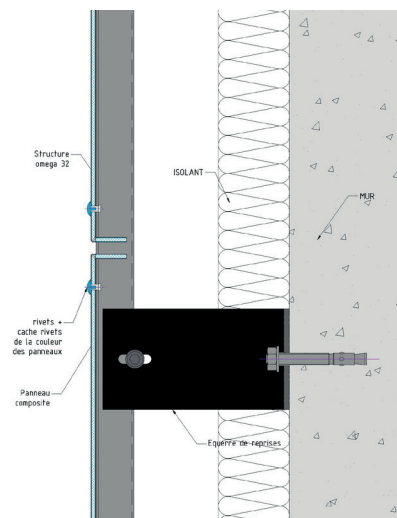
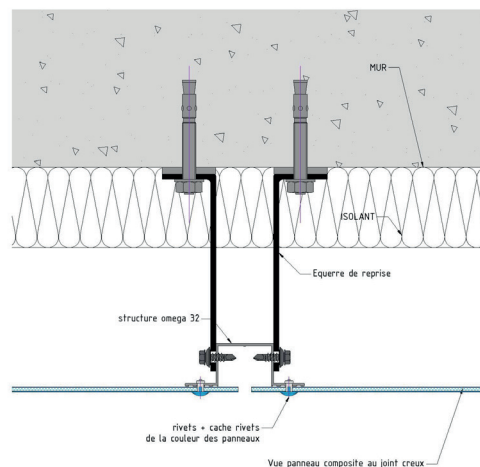
Installation system using front-fixing and riveting on two sides

Applications

Horizontal and vertical facade architecture with raised or curved forms (curved parts, contours, diamond points, deep coffers, etc.) and straight-line forms.

The benefits

- Option of closing the recessed joint with a double ply
- Finish with rivet painted the colour of the material or with rivet cover
- Optimisation of the distances between the fixing centres of the mounts, reducing installation time



Fitting

- Vertically fix the top-hat profiles of the framework
- Drill the profiles
- Rivet the vertical sides of the panels to the profiles

The system kit

- Ready-to-use panel
- Framework profiles supplied
- Rivet and rivet cover