

# SR4C SYSTEM

Visible fixing system using riveting on four sides for aluminium composite panels



## Principle

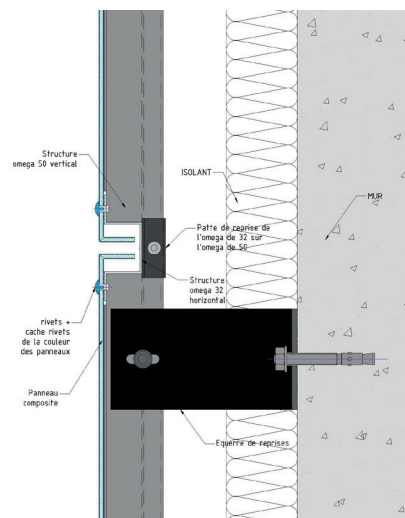
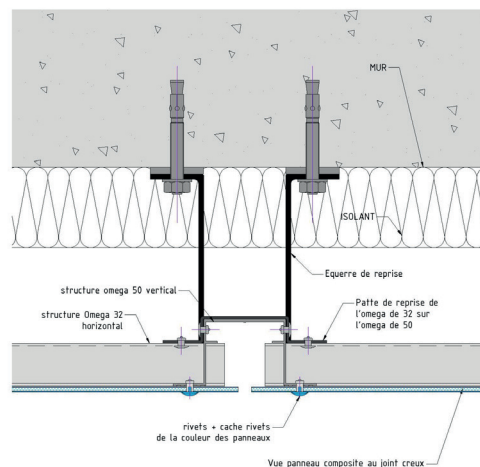
Installation system using front-fixing and riveting on four sides

## Applications

Horizontal and vertical facade architecture with raised or curved forms (curved parts, contours, diamond points, deep coffers, etc.) and straight-line forms.

## The benefits

- Profile invisible in the recessed joint
- Option of closing the recessed joint with a single fold
- Finish with rivet painted the colour of the material or with rivet cover
- Pre-drilled panel to ensure alignment on the facade



## Fitting

Vertically attach the top-hat profiles of the framework which have notches at the fixing centres of the horizontal joints

Interlock the horizontal top-hat profiles

Drill the profiles

Rivet the four sides of the panel to the profiles.

## The system kit

- Ready-to-use panel
- Framework profiles supplied
- Rivet and rivet cover