

SZ20 SYSTEM

Horizontal invisible fixing system for aluminium composite cassettes



Principle

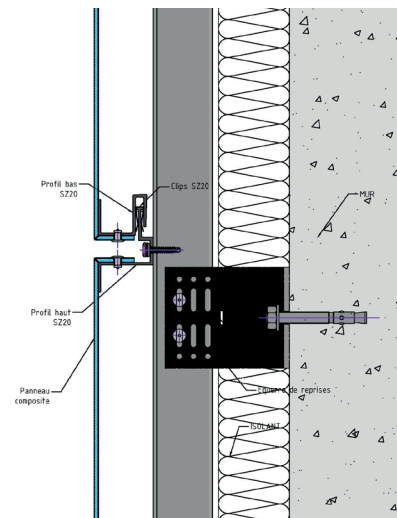
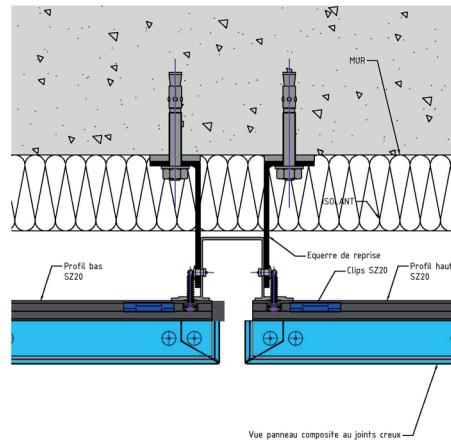
Installation system using interlocking on horizontal top-hat profiles with invisible fixings.

Applications

Horizontal facade architecture with straight-line forms.

The benefits

- Invisible fixings
- Quick installation using interlocking after adjusting the starter profile
- Long cassettes
- Reduces fixing operations by spacing out the fixing centres of the vertical profiles
- The vertical profile maintains the aesthetic appearance of the recessed joint (closed recessed joint)



Fitting

- Attach the vertical top-hat profiles
- Attach the starter profile
- Install the cassettes by interlocking with attachment to the vertical top-hats profiles

The system kit

- Ready-to-use cassettes
- Framework profiles supplied
- Starter parts supplied